

❖ Powerful and lightweight machine

THE NEW
SCORP 170(e)*
for pipe OD
15 mm to
175 mm!

SCORP 170(e) SCORP 220 Plus SCORP 360

Universal Pipe Cutter

The ultimate and fast solution for cutting of cast iron, stainless steel, steel, copper, aluminum and plastic pipes.

Ideal for pipe fitters to use on construction sites and in industrial pipe installations.

Your advantage:

- Powerful and lightweight machine
- Secure operation by means of overload protection and saw blade guard
- Burr-free and square cut
- Corrosion and heat resistant
- The SCORP 170e now incorporates a speed regulator

Your benefits:

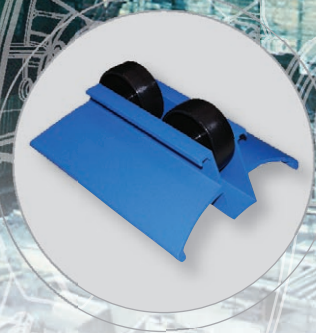
- Wide range of applications and dimensions
- No rework necessary
- Suitable for clamping joints
- Reduction of tool costs
- Lightweight, single person operation



❖ **NEW:** The SCORP 170e with speed regulator – preserves the tools, optimises the working process!



Complete range of saw blades;
TCT saw blade for steel, copper and plastic pipes, Diamond for cast iron and CERMET saw blades for stainless steel



SCORP 170(e) and SCORP 220 Plus are supplied with 4 small rollers



SCORP 360 is supplied with 2 small and 1 large roller



All of the machines are supplied with a handy carrying bag for ease of transportation

Universal Pipe Cutter SCORP

Technical data / application range	SCORP 170	SCORP 170e*	SCORP 220 Plus	SCORP 360
Code-No. (version 230 V, 50/60 Hz)	790 016 001	790 016 004	790 014 007	790 015 001
Code-No. (version 120 V, 60 Hz)	790 016 002	790 016 005	790 014 008	790 015 002
Code-No. (version 115 V, 50 Hz)	790 016 003	790 016 006	on request	on request
Dimensions	30 x 22 x 23 cm 11.8 x 8.7 x 9.1 inch	30 x 22 x 23 cm 11.8 x 8.7 x 9.1 inch	35 x 22 x 28 cm 13.8 x 8.7 x 11.0 inch	50 x 22 x 30 cm 19.7 x 8.7 x 11.8 inch
Weight	5.7 kg / 12.57 lbs	5.7 kg / 12.57 lbs	8.9 kg / 16.62 lbs	14.3 kg / 31.53 lbs
Power	1010 W / 1.3 hp (230 V) 950 W / 1.2 hp (120 V) 950 W / 1.2 hp (115 V)	1200 W / 1.6 hp (230 V) 1100 W / 1.5 hp (120 V) 1010 W / 1.3 hp (115 V)	1100 W / 1.5 hp	1400 W / 1.9 hp
Intermittent operation	S3 10 min. 25%	S3 10 min. 25%	S3 10 min. 25%	S3 10 min. 25%
Saw blade Ø	140 mm / 5.512 inch	140 mm / 5.512 inch	140 mm / 5.512 inch	140 mm / 5.512 inch 155 mm / 6.102 inch
Saw blade shaft Ø	62 mm / 2.441 inch	62 mm / 2.441 inch	62 mm / 2.441 inch	62 mm / 2.441 inch
Saw blade thickness max.	1.5 - 2 mm 0.059 - 0.079 inch	1.5 - 2 mm 0.059 - 0.079 inch	1.5 - 2 mm 0.059 - 0.079 inch	1.5 - 2 mm 0.059 - 0.079 inch
Max. cutting width saw blade	2.0 mm / 0.079 inch	2.0 mm / 0.079 inch	2.0 mm / 0.079 inch	2.0 mm / 0.079 inch
Rotation speed	4000 U/min (rpm)	1600 - 3500 U/min (rpm)	4000 U/min (rpm)	4000 U/min (rpm)
Noise level at the workplace according to EN 50144, approx.	86 dB (A) (230 V) 92 dB (A) (115/120 V)	94 dB (A) (230 V) 91 dB (A) (115/120 V)	95.5 dB (A)	95.5 dB (A)
Vibration level according to EN 50144, part 1	< 2.5 m/s ²	< 2.5 m/s ²	< 2.5 m/s ²	< 2.5 m/s ²
Pipe OD min. - max.	15 - 170 mm 0.591 - 6.693 inch	15 - 170 mm 0.591 - 6.693 inch	20 - 220 mm 0.800 - 8.660 inch	75 - 360 mm 2.950 - 14.170 inch
Wall thickness max. with steel	6 mm / 0.236 inch	8 mm / 0.315 inch	8 mm / 0.315 inch	8 mm / 0.315 inch
Wall thickness max. with plastic	14 mm / 0.551 inch	14 mm / 0.551 inch	10 mm / 0.394 inch	27.9 mm** / 1.098 inch**
Pipe materials	Cast iron, stainless steel, steel, copper, aluminum, all kinds of plastic.			

* SCORP 170e = with speed regulator
** depends on dimension

Stamp of distributor:

The technical data are not binding.
They are not warranted and characteristics are subject to change.
Please consult our General Conditions of Supply.

Info-Hotline: +49 (0) 77 31 792-787 up to 789